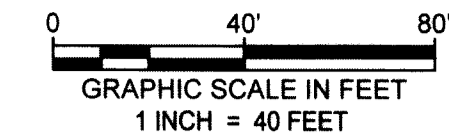


HOLIDAY INN PBI

A SUBDIVISION IN SECTION 28, TOWNSHIP 43 SOUTH, RANGE 43 EAST, CITY OF WEST PALM BEACH, PALM BEACH COUNTY, FLORIDA



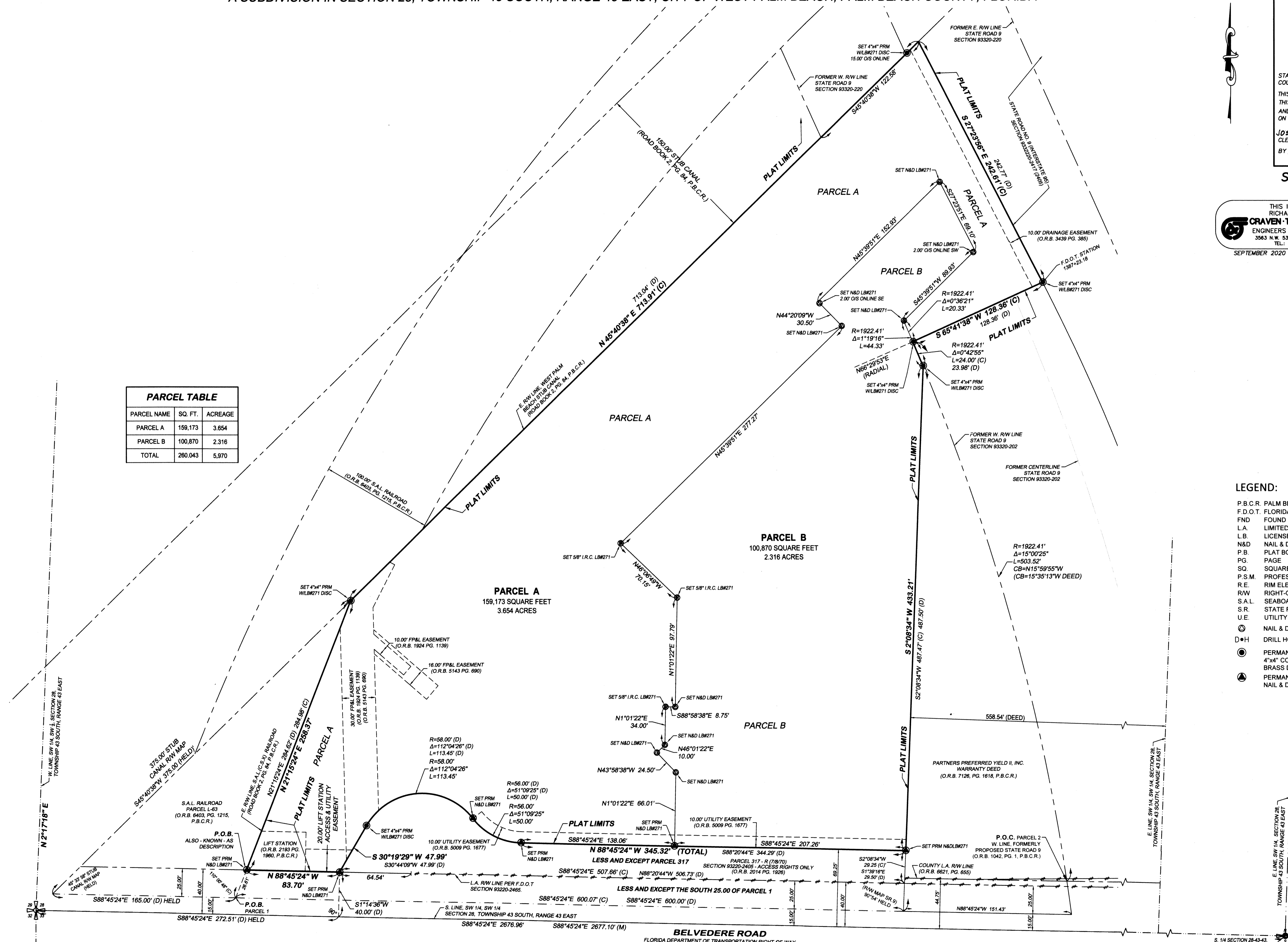
150

STATE OF FLORIDA
 COUNTY OF PALM BEACH
 THIS PLAT WAS FILED FOR RECORD AT _____
 THIS _____ DAY OF _____, 20____
 AND DULY RECORDED IN PLAT BOOK NO. _____
 ON PAGES _____
JOSEPH ABRUZZO
 CLERK & COMPTROLLER
 BY _____
 DEPUTY CLERK

SHEET 2 OF 2 SHEETS

THIS INSTRUMENT WAS PREPARED BY:
RICHARD D. PRYCE, P.S.M. #4038 OF
CRAVEN THOMPSON & ASSOCIATES, INC.
 ENGINEERS PLANNERS SURVEYORS
 3563 N.W. 53RD STREET FORT LAUDERDALE, FLORIDA 33309
 TEL.: (954) 733-6400 FAX: (954) 739-6409
 SEPTEMBER 2020 19-0034-001

PARCEL TABLE		
PARCEL NAME	SQ. FT.	ACREAGE
PARCEL A	159,173	3.654
PARCEL B	100,870	2.316
TOTAL	260,043	5.970



- LEGEND:**
- P.B.C.R. PALM BEACH COUNTY RECORDS
 - F.D.O.T. FLORIDA DEPARTMENT OF TRANSPORTATION
 - FOUND
 - L.A. LIMITED ACCESS
 - L.B. LICENSED BUSINESS
 - N&D NAIL & DISC
 - P.B. PLAT BOOK
 - PG. PAGE
 - SQ. SQUARE
 - P.S.M. PROFESSIONAL SURVEYOR & MAPPER
 - R.E. RIM ELEVATION
 - R/W. RIGHT-OF-WAY
 - S.A.L. SEABOARD AIR LINE RAILROAD
 - S.R. STATE ROAD
 - U.E. UTILITY EASEMENT
 - ⊙ NAIL & DISC
 - ⊙•H DRILL HOLE
 - ⊙ PERMANENT REFERENCE MONUMENT
 - ⊙• CONCRETE MONUMENT WILB#271 BRASS DISC.
 - ⊙ PERMANENT REFERENCE MONUMENT NAIL & DISC WILB#271 IN CONCRETE.